

4K UHD Mic Video Camera



(V2.0)

4K UHD Mic Video Camera

Product Advantages:

- Ultra crystal video quality: adopts advanced DSP, 1/2.8 inch 8.42 megapixel sensor and high quality 12 megapixel lens.
- Support Auto frame: Auto-frame participants at meeting start or enter, leave, or change positions
- All video, control and power over single USB cable.
- Smart and solid design.
- Plug & play, avoid focal length setting.
- Flexible hinge design: fit for monitor, PC, tripod, wall mount and on desk mounting.
- USB2.0 YUY2/MJPG/H.264 video format, works with Windows, MAC OS, Android, Linux.
- Standard UVC 1.1 protocol, compatible with most VC application.
- Built in dual microphone, pick up distance reach 5m.

Product Features:

- USB2.0 super speed output.
- 12 megapixel fixed lens, 4x digital zoom.
- 110 degree field of viewing.
- Lens distortion rate less than 4% (110° FOV).
- 3840*2160p30 ultra high resolution.
- Without motor inside, zero mechanical failure risk.
- Mirror, Flip, Anti-flicker feature.
- UVC control (via USB port).
- Audio communication protocol: UAC1.0.
- Audio encoding format: PMC.

4K UHD Mic Video Camera

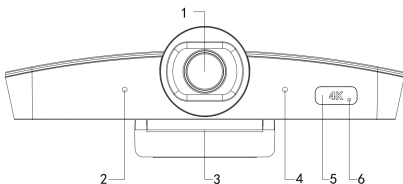
Model Spec

Sensor	1/2.8 inch high quality, 8.42 megapixel SONY CMOS sensor
Video Format	YUY2/NV12: 1280*720@15; 1024*576@20; 640*480@30
	MJPEG: 3840*2160@30; 2560*1440@30; 1920*1080@30; 1280*720@30; 1024*576@30; 640*480@30
	H.264/H.265: 3840*2160@30; 2560*1440@30; 1920*1080@30; 1280*720@30; 1024*576@30; 640*480@30
Optical Zoom	12 megapixel fixed lens
Digital Zoom	4X
Field of Viewing	110°
Sensor Resolution	8.42 megapixel
Control Port	USB2.0 (UVC/UAC)
Video Port	USB2.0
S/N Ratio	>50dB
Focal Length	f= 2.20mm
Minimum Lux.	0.1 lux
White Balance	Auto/Manual

4K UHD Mic Video Camera

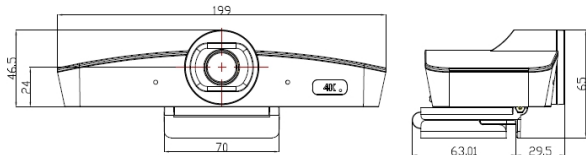
Iris	F 2.2
Electronic Shutter	Auto
Anti-Flicker	50HZ/60HZ/OFF
WDR	Supported
Polar distance	3~5 meters
Sensitivity	-26±2dB RL=2.2KΩ Vs=2.0V
Input Voltage	4.4~5.25V@500mA (USB port)
Dimension(L x Wx H)	199mm×92.5mm×65mm
Net Weight	0.32KG

Explanation:



- | | | |
|----------------|-------------------|-------------------|
| 1.Lens | 2.Microphone 1 | 3.Base bracket |
| 4.Microphone 2 | 5.Remote receiver | 6.Indicator light |

Dimension Drawing: (mm)



4K UHD Mic Video Camera

IR REMOTE CONTROLLER:

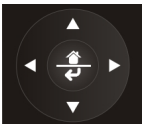


Power: Standby/Start camera. (This button is temporarily disabled.)

Image: on/off.



Preset bit: long press for 3 seconds to save the current position to the corresponding preset bit, short press to recall the preset bit, close AI mode before use.



Navigation keys: up and down, left and right

In normal working mode, it is used to adjust the position of the electric pan tilt and to select menu items after entering the menu.



Confirm/Home key:

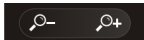
In normal operation mode, a short press returns the electric pan tilt to the Home position, which is used to confirm the menu options

after entering the menu.



Auto-track: Turn on AI mode.

Keyed/Manual: Turns off AI mode and triggers automatic tracking once.



Variable adjustment keys: +/-

Adjust the magnification of the electronic zoom and turn off the AI mode before using it.

4K UHD Mic Video Camera

OSD MENU:

SYSTEM	LANGUAGE	ENGLISH/CHINESE	
	PROTOCOL	Optional item:VISCA	Default: VISCA
	ADDRESS	VISCA:1~7	Default: 1
	BAUDRATE	2400,4800,9600,115200 optional	Default: 9600
	RETURN	Back to the main menu	

EXPOSURE	EXP.MODE	AUTO/MANU	Default: AUTO
	SHUTTER	Shutter speed:1/30~1/10000, only valid under MANU mode	Default: 1/100
	GAIN	Gain setting:0~15, only valid under MANU mode	Default: 0
	FLICK	OFF/50HZ/60HZ	Default: 50HZ
	BACKLIGHT	ON/OFF	Default: OFF
	GAMMA	0~15	Default: 8
	RETURN	Back to the main menu	

IMAGE	WB MODE	AUTO/MANU	Default: AUTO
	B_GAIN	Blue gain level:0~256, only valid under manual	Default: 100
	R_GAIN	Red gain level:0~256, only valid under manual	Default: 100
	DEFOG	Set the image permeability:OFF/1~15	Default: OFF
	RETURN	Back to the main menu	

QUALITY	2D NR	Set 2D noise reduction level:ON/OFF	Default: OFF
	3D NR	Set 3D noise reduction level:OFF/AUTO/1~4	Default: AUTO
	SHARPNESS	Sharpness setting:0~15	Default: 8
	CONTRAST	Contrast setting:0~15	Default: 8
	SATURATION	Saturation setting:0~15	Default: 8
	BRIGHT	Bright setting:0~15	Default: 8
	RETURN	Back to the main menu	

CTRL	MIRROR	Turn the screen left and right ON/OFF	Default: OFF
	FLIP	Picture up and down (hoisting mode)	Default: OFF
	AUTO FRAME	AUTO/MANU	Default: AUTO
	RETURN	Back to the main menu	

RESET	CAM RESET	Reset camera parameter to default	
	RETURN	Back to the main menu	

INFO	CTRL VER	Camera movement control program version	
	CTRL DATE	Release date of camera movement control program	
	RETURN	Back to the main menu	

4K UHD Mic Video Camera

Suggested Installation Modes:



Model 1: on top of laptop



Model 2: on top of monitor



Model 3: on top of flat TV screen



Model 4: at the bottom of TV



Model 5: wall mount

