



VISION+ 4KN

4K60 NDI®HX Auto Tracking Live Streaming PTZ Video Camera

Deliver High-End Features for Live Broadcasting

Vision+ 4KN is a new series PTZ camera from Telycam, built-in native auto-tracking feature, integrated with the latest NDI®SDK, and equipped with American most advanced image processing solution to output 4K60 sharp image. It has smooth PTZ mechanical design, to make accurate pan, tilt, and zoom movement. NDI®HX, HDMI 2.0, SDI and USB 2.0 simultaneously output 4K UHD and Full HD resolution, ideal for professional live streaming applications. Line in audio input, the audio can output with video simultaneously from NDI®HX, HDMI 2.0, SDI. With 12X, 20X and 30X optical zoom available, the Vision+ 4KN can fit seamlessly into any production scenario.

**NDI®HX | 12X/20X/30X | 4K60
AUTO-TRACKING**



4K UHD Resolution

Equipped with cutting-edge image processor, Vision+ 4KN outputs 4Kp60/59.94 video for clear, sharp, lifelike images even in low-light environments.

Built-in Auto Tracking function

With its built-in auto-tracking function, users can track targets, switch targets, set target areas, or adjust target size effortlessly without any third party software or device.

FreeD

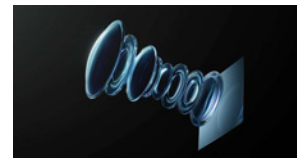
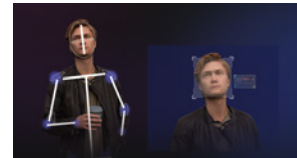
The Vision+ 4KN integrates Free D technology for versatile shooting angles, ideal for both real-world and virtual applications.

12X/20X/30X Optical Zoom

The Vision+ 4KN offers 12X, 20X, and 30x optical zoom options with FOVs of 80.5°, 61°, and 60.5° respectively. Its advanced focusing algorithm ensures rapid and accurate focus even during zoom or movement.

NDI®HX /3G-SDI/HDMI 2.0/USB 2.0 Available

The device supports NDI®HX and HDMI2.0 outputs at 4Kp60/59.94 si-multaneously, 3G-SDI(Level A and B) outputs 1080p60/59.94, and USB-C output up to 4K30.



Specifications

Camera	Vision+ 4KN 12x	Vision+ 4KN 20x	Vision+ 4KN 30x
Part NO.	TLC-300-IP-12-4K(NDI)-AB	TLC-700-IP-20-4K(NDI)-AB	TLC-700-IP-30-4K(NDI)-AB
Sensor	1/2.8 inch, 9MP UHD CMOS sensor	1/1.8 inch, 9MP UHD CMOS sensor	1/1.8 inch, 9MP UHD CMOS sensor
Zoom	12X optical zoom	20X optical zoom	30X optical zoom
Lens	f= 3.4mm~40.3 mm, F1.8~F3.6	f = 6.25mm~112.5 mm, F1.58~F3.95	f= 6.91~214.64mm, F1.35~F4.6
Horizontal View Angle	80.5°(Wide)~7.6°(Tele)	61°(Wide)~3.5°(Tele)	63°(Wide)~2.1°(Tele)
Vertical Viewing Angle	50.0°~4.4°	34.1°~1.9°	34.14°~1.12°
Diagonal Viewing Angle	88.9°~8.7°	60.7°~3.5°	67.08°~2.27°
Minimum Working Distance	1.0m	1.0m	1.5m
S/N Ratio	≥50dB		

Video Format	HDMI2.0: 3840*2160P60/59.94/50/30/29.97/25; 1920*1080P60/59.94/50/30/29.97/25/24/23.98; 1920*1080i60/59.94/50; 1280*720P60/59.94/50/30/29.97/25
	NDI®HX: Main Stream: 3840*2160P15~60; 1920*1080P15~60; 1280*720P15~60; 1024*576P15~60; Sub Stream: 640*360P15~30
	3G-SDI: 1920*1080P60/59.94/50/30/29.97/25/24/23.98; 1920*1080i60/59.94/50; 1280*720P60/59.94/50/30/29.97/25
	USB Type-C: NV12: 1920*1080P5;1280*720P15;1024*576P25;800*448P30; YUYV: 1920*1080P5;1280*720P15;1024*576P25;800*448P30; MJPG: 3840*2160P30;1920*1080P60; 1280*720P60;1024*576P60;800*448P60; H264/H265:3840*2160P30;1920*1080P60; 1280*720P60;1024*576P60;800*448P60

Image Parameters

Noise Reduction	2D&3D
Minimum lux	12X: 0.5Lux (50 IRE Max AGC, 1/30, F1.8) 20X: 0.5Lux (50 IRE Max AGC, 1/30, F1.8) 30X: 0.5Lux (50 IRE Max AGC, 1/30, F1.8)
White Balance	Auto/Manual/ATW/Push/Indoor/Outdoor/Color Temperature
Exposure	Auto/Manual/Shutter Priority/Iris Priority/Brightness Priority
Anti-Flicker	OFF, 50Hz, 60Hz
Image Flip	Supported
Mirroring	Supported
Focus	Auto/Manual
Iris	Auto/Manual
Electronic-shutter	Auto/Manual
Gamma	Supported
Backlight Compensation	Supported

IP Streaming

Video Encoding	H.264/H.265
Bitrate Control	Variable bitrate(VBR), Constant bitrate(CBR)
Bitrate Range	1024Kbps~61440Kbps
Network Port Speed	1000M
Protocol	NDI®HX, SRT, HTTP, RTSP, RTMP, ONVIF, VISCA over IP, TCP, UDP, VISCA, PELCO P/D, HTML5, Webrtc, RTP Multicast

Pan/Tilt Movement

Preset	Remote controller: 10; Serial port: 128; Accuracy: 0.1°
Pan Rotation Angle	-170° ~+170°
Tilt Rotation Angle	-30° ~+90°
Pan Rotation Speed	12X: 0.1°~120°/s 20X: 0.1°~120°/s 30X: 0.1°~80°/s
Tilt Rotation Speed	12X: 0.1°~80°/s 20X: 0.1°~80°/s 30X: 0.1°~60°/s

I/O Interface

Control Port	RS232(RS485), NDI®HX
Video Port	NDI®HX, HDMI 2.0, 3G-SDI, USB Type-C
Audio Port	stereo 3.5mm linear inputs
Tally	Supported
POE+	Supported
Daisy Chain	Supported

General

Input Voltage	DC12V, POE+(IEEE802.3at)
Operating Temperature	-10°C~50°C
Operating Humidity	≤80%
Dimension (LxWxH)	12X: 220mmx190mmx173mm 20X: 220mmx190mmx173mm 30X: 220mmx190mmx193.5mm
Net Weight	12X: 1.5kg(3.3LBS) 20X: 1.5kg(3.3LBS) 30X: 1.9kg(4.2LBS)
Color	Black/White

Audio Input

3.5mm stereo line in

Power Supply
POE+, DC12V

Remote control port

RS232, RS485



Video Output

3G-SDI, HDMI, USB Type-C, NDI®HX